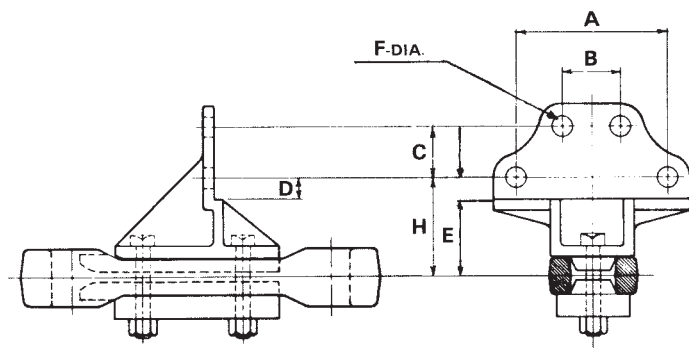
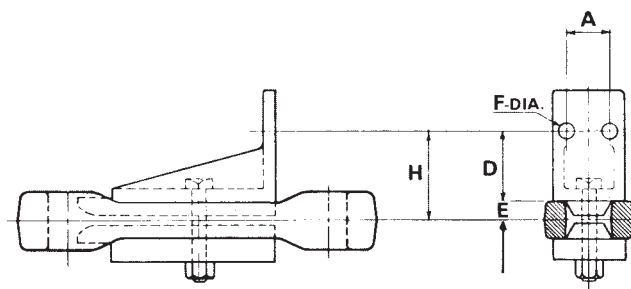


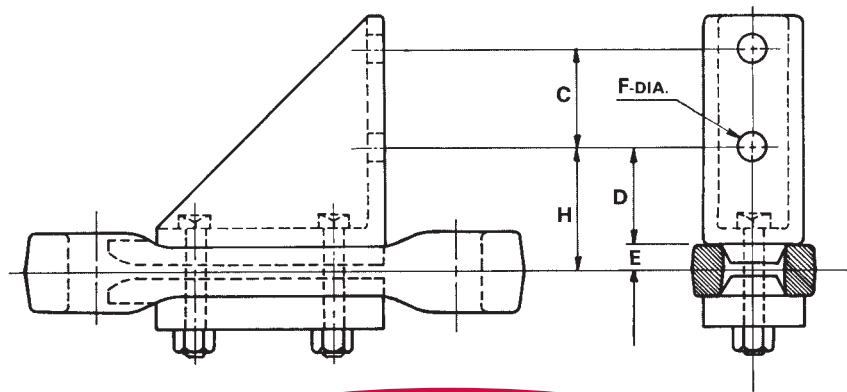
S Attachments



STYLE 1 S-2A



STYLE 2 S-2



STYLE 3 S-22

Chain Size	Style	Part No.	A	B	C	D	E	F Bolt Dia.	H	Weight	Material* Each
458	3	4S2B			2	1 ¹³ / ₁₆	⁵ / ₁₆	¹ / ₂	2 ¹ / ₄	1.46	M.I.
468	2	4S2A	1 ¹ / ₂			2 ¹ / ₁₆	⁵ / ₁₆	¹ / ₂	2 ⁵ / ₁₆	1.05	M.I.
468	3	4S2D			2	2 ¹ / ₁₆	⁵ / ₁₆	¹ / ₂	2 ¹ / ₄	1.63	M.I.
678	2	6S2A	1 ¹ / ₂			3	1 ¹ / ₂	³ / ₈	3 ¹ / ₂	2.50	M.I.
678	1	6S2D	5 ⁵ / ₁₆	2 ¹ / ₈	1 ³ / ₄			¹ / ₂	3 ¹ / ₂	4.64	M.I.
678	3	6S2BK			2 ¹ / ₄	2 ¹ / ₁₆	1 ¹ / ₂	³ / ₈	2 ³ / ₂	3.32	M.I. & C.S.
698	3	6S2W			2 ¹ / ₂	3 ¹ / ₂	¹ / ₂	³ / ₄	4	4.25	M.I. & C.S.
998	3	9S22			3	2 ¹ / ₄	¹ / ₂	³ / ₄	3 ¹ / ₄	8.00	M.I.
998	1	9S2A	5 ⁵ / ₁₆	2 ¹ / ₈	1 ³ / ₄	1 ¹ / ₁₆	2 ¹ / ₂	¹ / ₂	3 ¹ / ₁₆	8.10	M.I.
998	3	9S2D			6 ⁷ / ₁₆	3 ¹ / ₂	¹ / ₂	³ / ₈	4	10.50	M.I.
9118	3	9S2F			6 ¹ / ₂	3 ¹ / ₁₆	1 ¹ / ₁₆	³ / ₄	4 ¹ / ₄	12.00	M.I.
9148	3	9S2C			6 ⁷ / ₁₆	3 ¹ / ₁₆	1 ¹ / ₁₆	³ / ₄	4 ¹ / ₂	12.10	C.S.

*M.I.—Malleable Iron
C.S.—Cast Steel



WILMOT
COMPANY, INC.



Call 1-888-5WILMOT
Fax 1-570-443-7594
www.wilmotco.com