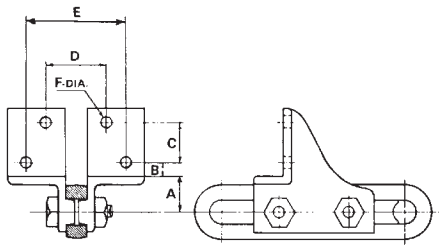
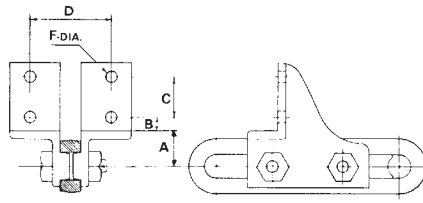
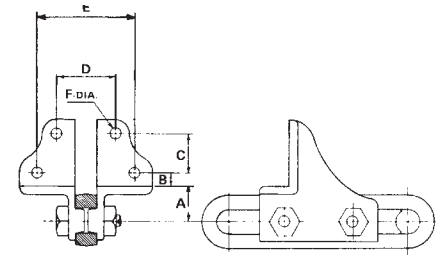


F-2 Attachments


STYLE 1

STYLE 2

STYLE 3

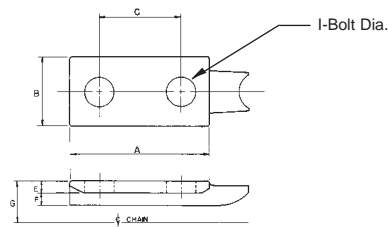
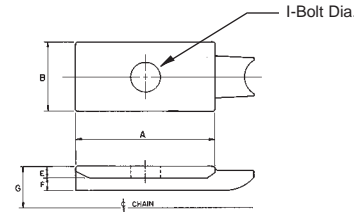
Type*	Chain Size	Style	Part No.	A	B	C	D	E	F Bolt Dia.	Weight Each	Material**
A	458	2	4F2C	1 ³ / ₁₆	1	1 hole	3 ³ / ₁₆		1/2	0.81	M.I.
A	468	2	4F2J	3 ¹ / ₃₂	1	1 1/4	3 ¹⁵ / ₁₆		1/2	1.40	M.I.
A	468	2	4F2S	3 ¹ / ₃₂	1	1 hole	3 ¹⁵ / ₁₆		1/2	0.93	M.I.
S	468	2	4F2D	1 ⁵ / ₁₆	1 1/2	1 hole	3 3/4		1/2	1.77	M.I.
A	678	1	6F2C	1 1/16	7/8	1 1/2	2 1/16	4 3/16	1/2	1.94	M.I.
A	678	3	6F2F	1 1/16	7/8	1 1/4	2 1/16	4 3/16	1/2	1.85	M.I.
A	698	2	6F2D	1 1/32	3/4	2	3 15/16		1/2	2.45	M.I.
A	998	2	9F2S	1 25/32	3/4	2	3 15/16		1/2	3.74	M.I.
A	998	2	9F2A	1 17/64	3/4	2	6		1/2	3.56	M.I.
A	998	2	9F2D	1 1/32	3/4	2	3 15/16		1/2	2.96	M.I.
A	998	3	9F2F	1 11/16	5/8	2 1/16	2 1/32	6 3/16	1/2	3.37	M.I.
A	9118	2	9F2C	1 3/8	5/8	2	4		1/2	3.90	M.I.
A	9148	1	9F2R	1 3/8	1 1/4	4	4 1/2	6 1/2	3/8	8.15	M.I.

*S-Side Link Attachment

A-Bolted Center Link Attachment

**M.I.-Malleable Iron

Filler Blocks


STYLE 2

STYLE 3

Chain Size	Style	Part No.	A	B	C	E	F	G	I Bolt Dia.	Weight Each
458	3	4-A-3-B	2 1/4	1 3/8		3/16	3/16	3/8	1/2	0.60
468	3	4-A-3-A	1 3/8	1 1/16		3/16	3/16	3/8	1/2	0.60
678	3	6-A-3-B	3 3/8	1 13/16		3/16	3/16	23/32	3/8	0.90
698	3	6-A-3	2 11/32	2 3/8		1 1/32	7/16	27/32	3/4	0.92
998	2	9-A-3	5 3/32	2 3/8	3 3/4	3/8	7/16	7/8	3/8	1.75
9118	2	9-A-3-B	5 3/8	3	3 1/2	3/8	3/16	1 1/16	3/4	2.15
9148	2	9-A-3-R	4 3/8	3 3/4	2 1/2	3/8	1 1/16	1 3/16	3/4	2.81



WILMOT
COMPANY, INC.



Call 1-888-5WILMOT
Fax 1-570-443-7594
www.wilmotco.com